



Installation at T5 Heathrow © Alex Delfanne / Artwise Curators 2008



Splash Rendering - Christopher Pearson 2010©



ETCH is a bespoke range of glass and perspex products that use the industrial process of laser etching in a creative and innovative way. Through its ability to capture 3D shapes within the volume of glass, ETCH has created a range of patterns with depth and a series of sculptural forms.

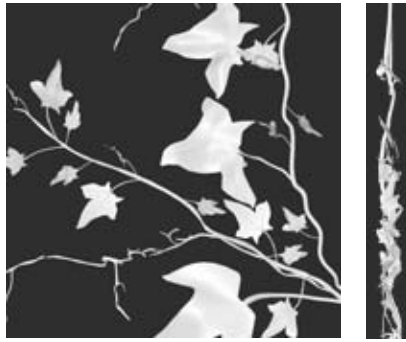




# ETCH Patterns

ETCH patterns is a range of repeating designs that have a third dimension. The collection is displayed as a series of glass samples (250mm x 250mm x 19mm). Each glass tile shows a section of the overall design, so the client can get a better picture of the varying approaches and styles. All patterns are then ordered according to the specific dimensions required, and can be adapted to fit different depths, customised to specific shapes.

ETCH takes on a new character when exposed to LED lights. By working with a lighting specialist, installations can change the environment, whilst still existing as individual artworks.



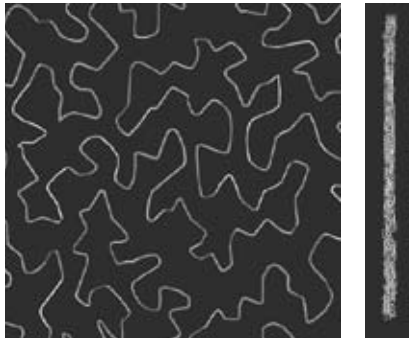
## CLIMBING IVY

A repeating climbing Ivy print. This design captures 3D leaves, winding stems, and the delicate roots of the common ivy.



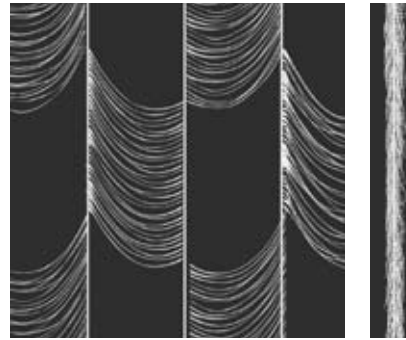
## ENTOMOLOGY

Based on a Timourous Beasties wallpaper pinned insects are captured as specimens within the glass



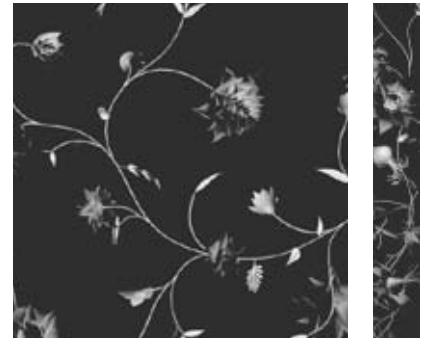
## VERMICULAR

Inspired by the synonymous Wallpaper designers Cole and Son, Vermicular takes a influence from Roman Stone carving that resembles the form, markings, motion or tracks of worms. This creates a pattern that moves frantically through the depth of the glass and when viewed at different angles, changes pattern to reveal the 3d form.



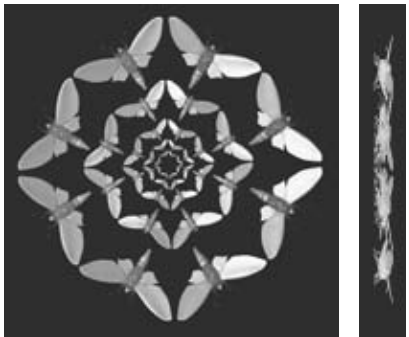
## CHEVRON THREAD

The first in a series of thread designs, Chevron uses cloth simulations to capture fabric like patterns blowing in the wind or falling with gravity.



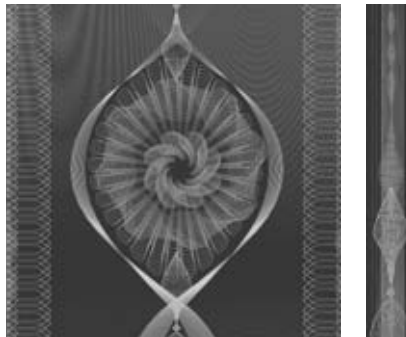
## TOILE FLOWER

This was the first design in the ETCH series. Created by Jean-Louis Billard the design was based on a french Toile de Joey style from the 18th Century. A classic and delicate piece the design can be scaled according to the thickness of the glass.



## MOTH ROSE

Based on a Timourous Beasties wallpaper, this piece uses highly detailed models of moths to create a pattern inspired by the 'Tudor Rose'. It can be used as one off icon or a repeating pattern and can be spaced depending on cost or aesthetic preference.



## GUILLOCHÉ

Guilloché is a decorative engraving technique in which there is very intricate, repetitive pattern. It is most commonly associated with the imagery of banknotes, this pattern lends itself to extruding in a 3D form.



## FOREST #1

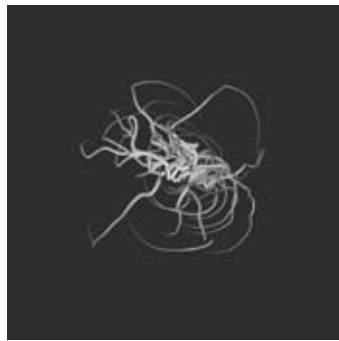
Vanessa da Silva's signature style captured as a square of draped fabric captured within a tile of glass.



# ETCH Forms

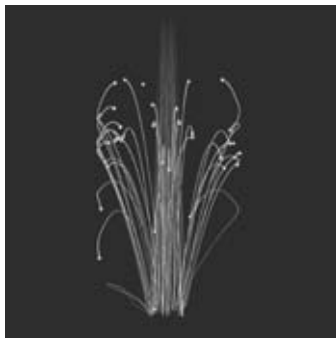
Created as a series of limited edition forms captured within blocks of optical glass. The dimension of the glass stays the same and the form is regenerated using slightly different parameters. The dimensions are 250mm x 95mm X 95mm

Each block has a 22mm x 70mm hole that will hold a standard candle, single flower or be fitted with a light fixing.



## ROOTS

Using the hole within the glass block as a starting point, organic roots grow out to show an organic structure within the volume of the glass. This was specifically created for the use of a single flower. Each Model in the edition will be unique



## NEWTON

A series of spheres are simulated falling, and their paths tracked. By tracing these lines, a pattern of movement is created. Each model in the edition will be unique.



## SPLASH

Using high end liquid simulating software, a jet of water is created as a 3D animation. This can be frozen in time and etched within the volume of the glass. Each Model in the edition will be unique

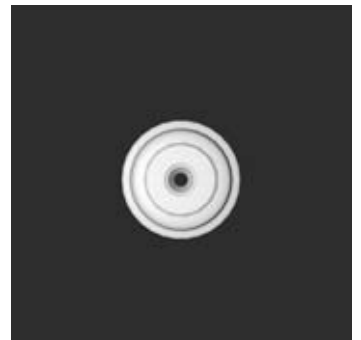
## CANDLESTICK

The Candlestick dimensions are 200mm x 95mm X 95mm with a similar 22mm x 70mm hole. Currently there are three versions within this series, with further styles and sizes available in early 2011.

### #1



### #3



### #3



# ETCH

---

Revolving Doors / Glass  
Canvas / Mirrors / Kitchen  
Splash backs / Side Tables /  
Desks / Wall Panels / Room  
Dividers / Shower doors /  
Window & Door Panels /  
Glass sinks / Artworks /  
Balcony / Bookends /  
Candlesticks / Pen holders /  
Vases / ...

---

ETCH is a collaboration between Christopher Pearson and Vitrics.

---

## CHRISTOPHER PEARSON

Described as a 'pioneering digital designer/artist' Christopher Pearson's work explores the space between the virtual world of digital technology and the tangible tradition of craft. Working on bespoke projects, his work is low run and high end, enabling him to explore the lost art of craft.

Best known for his Animated Wallpapers, he was commissioned to instal three permanent works for British Airways at Heathrow Terminal 5. One of the other commissioned pieces was Oak seasons, which benchmarked the first major instatations as part of the ETCH series.

## VITRICS

A new innovative process for 3 dimensional engraving inside glass and acrylic. In collaboration with designers and architects we recreate contemporary designs and translate original ideas into 3 dimensions, engraving them inside glass and acrylic. We can provide all necessary support in order to complete your projects, including:

- "Customized sampling": for research and development of prototypes.
  - 3D design modeling.
  - Lighting solutions.
-





Rendering of Entamology - Christopher Pearson 2010©



Rendering of Moth Rose - Christopher Pearson 2010©





photo © Alex Delfanne / Artwise Curators 2008



photo © Alex Delfanne / Artwise Curators 2008







---

## Technical Specifications

### Dimensions of glass/acrylic

The Vitrics process can be used in most types of industrially produced glass, including laminated glass, and most types of acrylic.

Max Sheet size:- 3200mm x 1430mm

Max Block Size:- 350mm x 250mm x95mm

### Production time:-

Etch patterns range, leadtime 4 weeks plus

Etch forms range, leadtime 10 days plus

### Drilling, Curving Glass

Etch glass can be curved or reshaped.

Drilling holes within the glass is possible

### Pricing

Please contact us with your project and we will provide an estimate within 48 hours.

As a guide trade price's per unit/m<sup>2</sup> are:-

Etch Patterns begins at £800 a square metre

Etch Forms begins at £200 for a 200mm x 95mm x95mm

---

#### CHRISTOPHER PEARSON

Christopher Pearson  
Unit 23,  
47/49 Tudor Road,  
London,  
UK  
E9 7SN

+44 (0)7958 253992  
+44 (0) 208 533 7872

mr@christopherpearson.com  
<http://www.christopherpearson.com>

---

#### VITRICS

Jeremy Buckland  
Vitrics  
14, rue Gambetta,  
Le Mesnil-le-Roi,  
78600,  
France

+33 (0)139620578 (France)  
+44 (0)870 7771101 (UK)

enquiries@vitrics.com  
<http://www.vitrics.com>

